

Introducing...



**Three 6-Plex Buildings and one 4-Plex building creating a total of
22 Beautifully Crafted New Apartment Homes nestled at Sun
Meadows in North Las Vegas. Featuring a Spacious Two-Bedroom
Floor Plan with Front Patios & Rear Balconies
Call (661) 912-1485 For Information.**

Price: _____

Sun Meadows presents beautifully designed two-bedroom, one-bath apartment homes created for modern living and lasting comfort. Each residence offers inviting outdoor space with a welcoming front patio and a private rear balcony, extending your living area beyond the walls of your home.

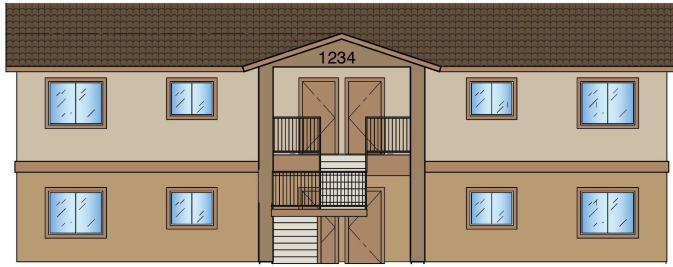
Inside, you'll find luxury vinyl plank flooring throughout and a bright, contemporary kitchen finished with granite countertops, a sleek 6" backsplash, and stylish shaker laminate cabinetry available in white or gray. Soft-closing cabinet doors and a full GE Energy Star appliance package—including refrigerator, range, microwave, dishwasher, and an in-home washer and dryer—deliver both elegance and everyday convenience.

Sun Meadows blends quality craftsmanship, efficient design, and desirable finishes to create homes that are as functional as they are beautiful.



Delsa Homes
7700 Irvine Center Dr.
661-912-1485
www.delsahomes.com

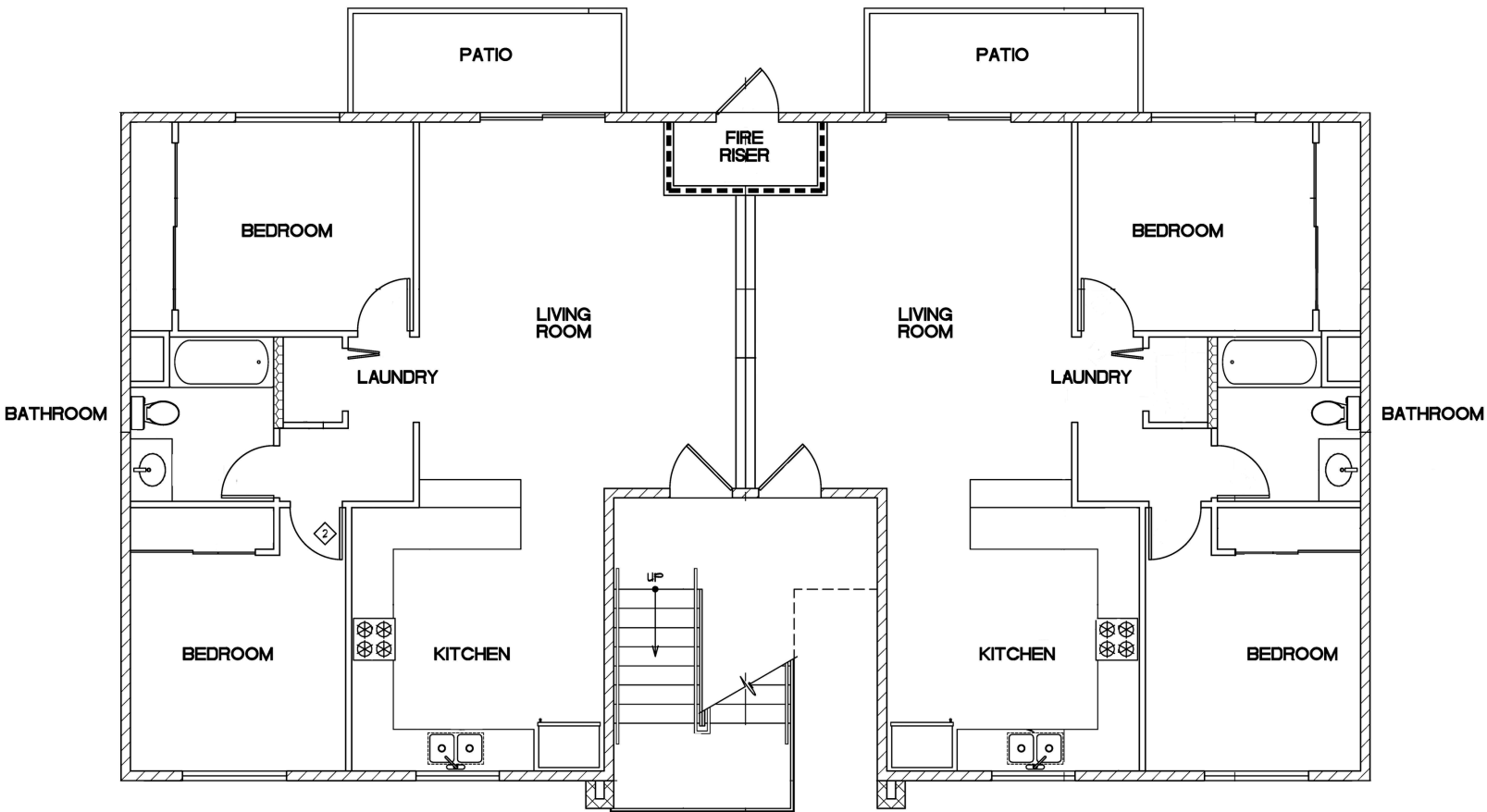
Builder reserves the right to make changes or modifications to maps, plan specifications, materials, features and colors without notice. All maps, plans and renderings are artist's conceptions and are not to scale. All square footages are approximate. Floor plan configurations, porches, window sizes and placements vary in some locations and elevations.



4-Plex - 4 Units



6-Plex - 18 Units



Specifications:

- 2 Bedroom + 1 Bath
- Back Patio/Balcony
- Luxury Vinyl Plank Flooring Throughout
- Stunning Granite Countertops with 6" Backsplash
- Shaker Laminate Cabinets in White or Gray
- Soft Closing Hinges on All Doors
- In-home washer and dryer

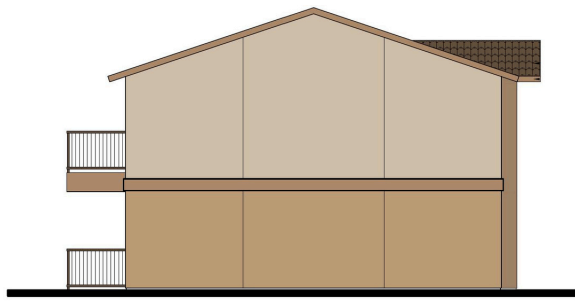
GE Energy Star Appliance Package Includes:

- Dishwasher
- Gas Range
- Microwave
- Refrigerator
- Washer
- Dryer

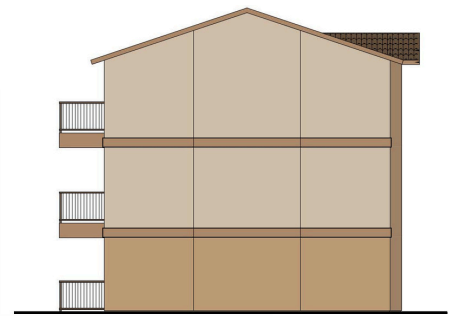


Delsa Homes
7700 Irvine Center Dr.
661-912-1485
www.delsahomes.com

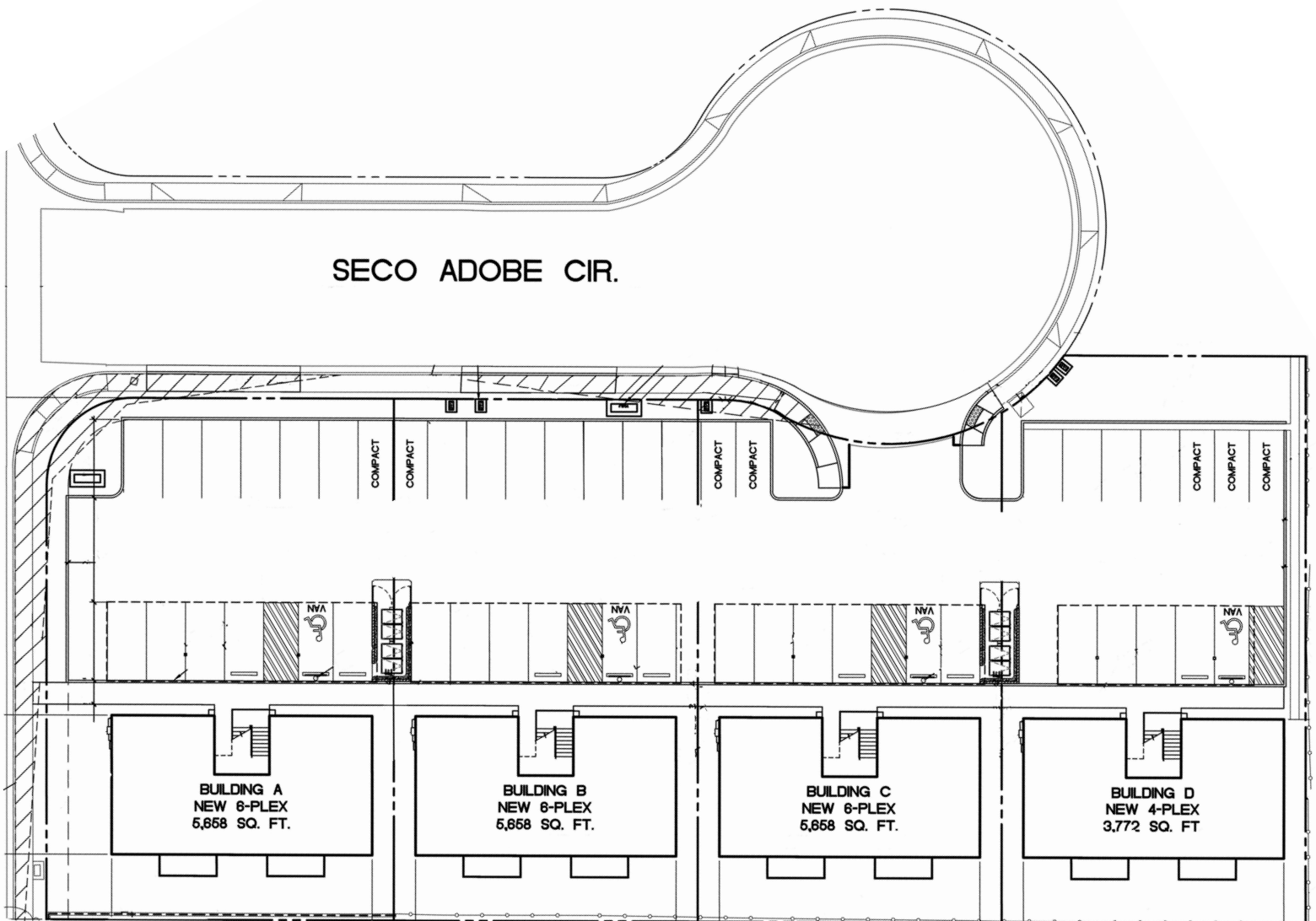
Builder reserves the right to make changes or modifications to maps, plan specifications, materials, features and colors without notice. All maps, plans and renderings are artist's conceptions and are not to scale. All square footages are approximate. Floor plan configurations, porches, window sizes and placements vary in some locations and elevations.



4-Plex - 4 Units



6-Plex - 18 Units



Builder reserves the right to make changes or modifications to maps, plan specifications, materials, features and colors without notice. All maps, plans and renderings are artist's conceptions and are not to scale. All square footages are approximate. Floor plan configurations, porches, window sizes and placements vary in some locations and elevations.



Delsa Homes
7700 Irvine Center Dr.
661-912-1485
www.delsahomes.com