

Introducing



Deer Creek II

18 Beautifully Appointed New One- and Two-Story Single-Family Homes

Located in Palmdale. **No HOA, No Mello-Roos and Low Taxes.**

Call (661) 912-1485 For Information.

Plan 1

From _____

This single-story, 3,043-square-foot home offers 2 elevation selections, 4-bedrooms, 3.5-bath, and a 3-car Tandem garage. Featuring a gourmet oversized eat-in island in the kitchen with hand-selected Quartz counter-tops, walk-in pantry, breakfast nook and a large family room. Also included; large laundry room with plenty of storage, luxurious master bathroom with garden tub and tile tub deck, walk-in rain shower and separate sinks with a great walk-in closet. Additionally including a large open spaced courtyard upon entry and indoor/outdoor living patio with impressive multi-sliding glass door (included).

Builder reserves the right to make changes or modifications to maps, plan specifications, materials, features and colors without notice. All maps, plans and renderings are artist's conceptions and are not to scale. All square footages are approximate. Floor plan configurations, porches, window sizes and placements vary in some locations and elevations.

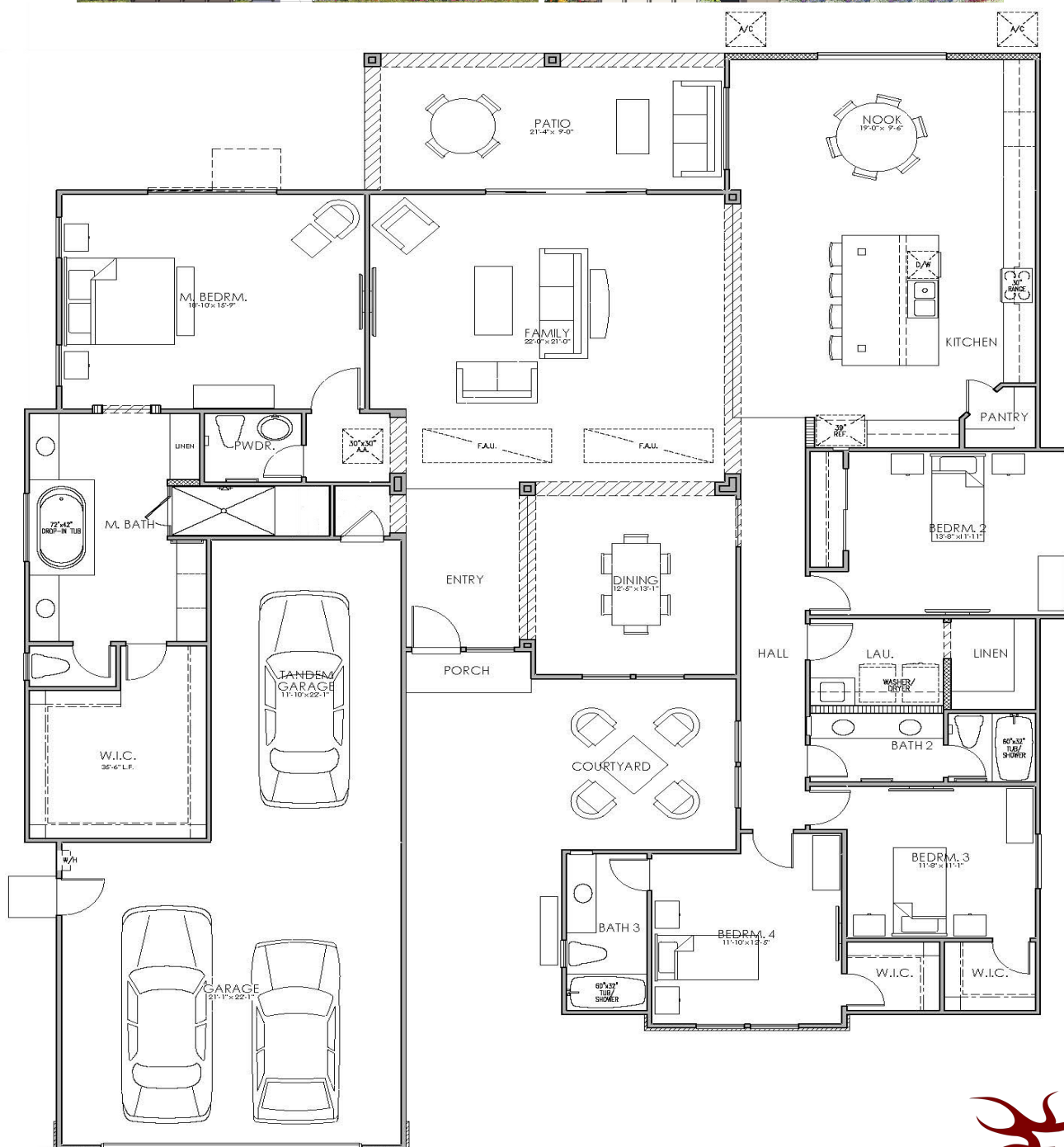


Delsa Homes
7700 Irvine Center Dr., Irvine CA 92618
(661)912-1485

Spanish
Elevation



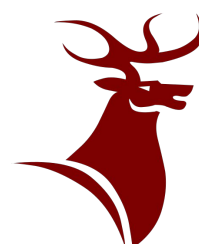
Craftsman
Elevation



Plan 1

3,043 Square Feet • 4 Bedrooms • 3.5 Baths • 3-Car Tandem Garage

Builder reserves the right to make changes or modifications to maps, plan specifications, materials, features and colors without notice. All maps, plans and renderings are artist's conceptions and are not to scale. All square footages are approximate. Floor plan configurations, porches, window sizes and placements vary in some locations and elevations.



Deer Creek II

Introducing



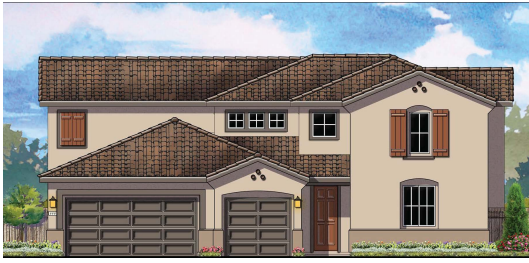
Deer Creek II

Plan 2

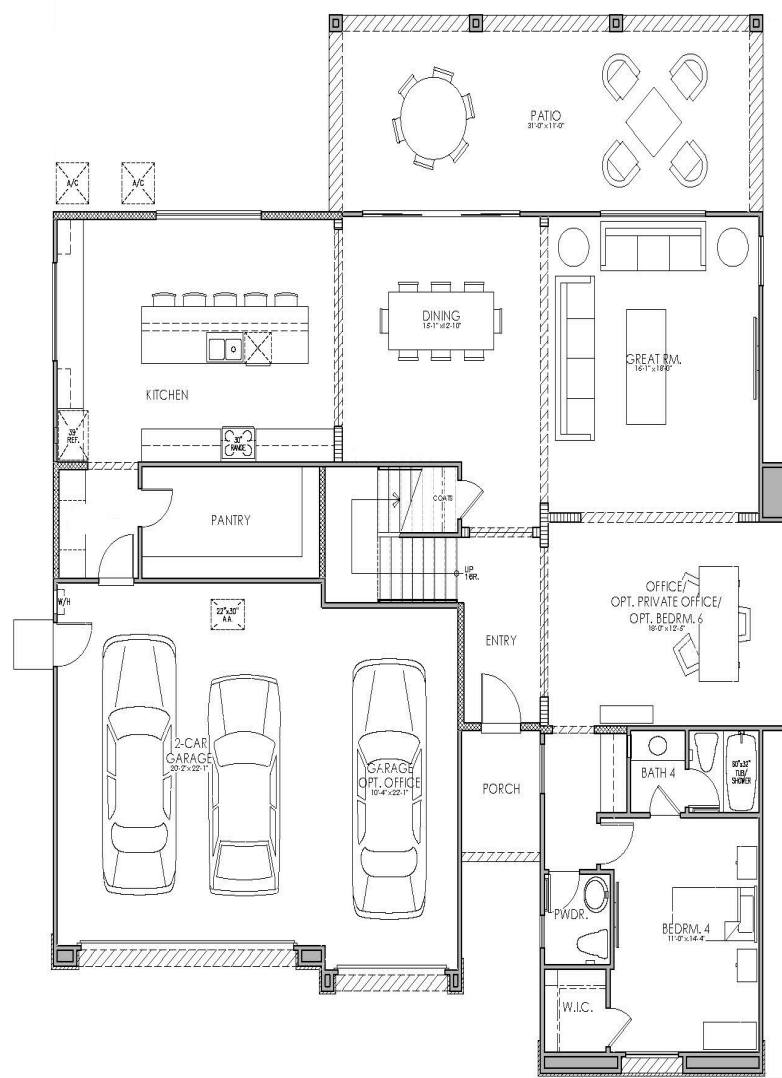
From _____

This two-story, 3,469 square-foot home offers 2 elevation selections, 4-suite bedrooms plus loft, 4.5-bath and 3 car garage. Also featuring a gourmet oversized eat-in island in the kitchen with hand selected Quartz counter-tops, walk-in pantry, family great room and living/dining room. Plus Second-floor laundry room with extended loft, luxurious master bathroom with a garden tub and tile tub deck, separate walk-in rain shower and lovely his and hers walk-in closets. Large covered Patio with outdoor living with impressive multi-sliding glass door (included). This home offers an option of up to 6 bedrooms of thoughtfully designed space, an option of Next Gen living, or even a private office

Spanish Elevation



Craftsman Elevation



Plan 2

3,469 Square Feet • 4 Bedrooms • 4.5 Baths • 3-Car Garage

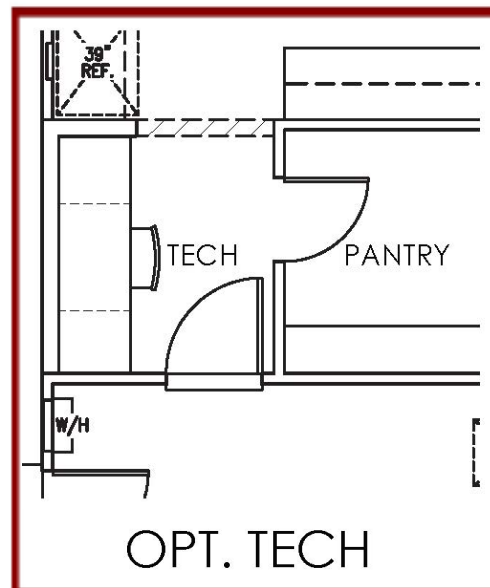
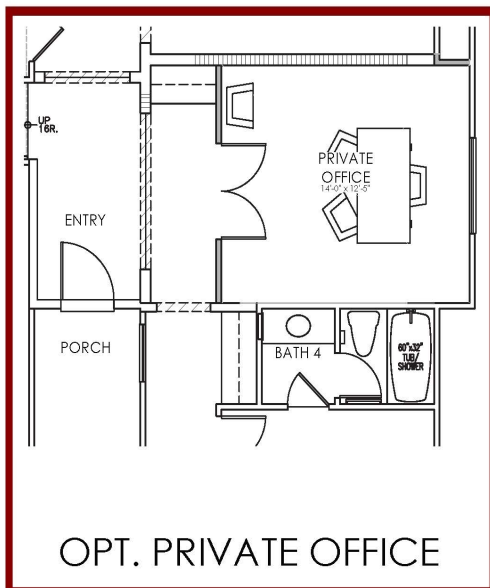
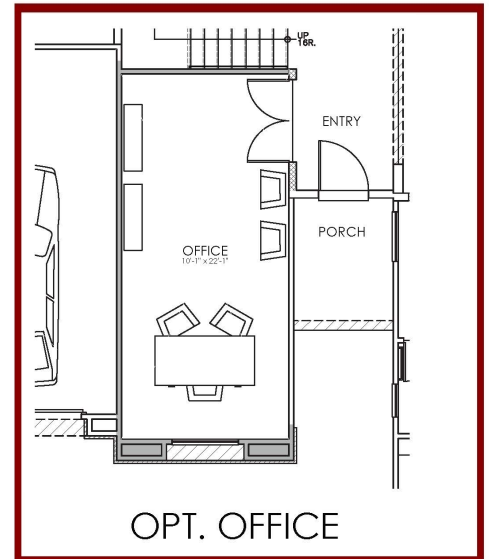
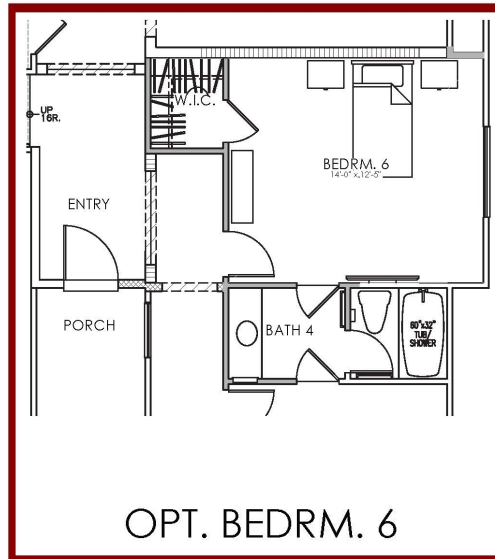
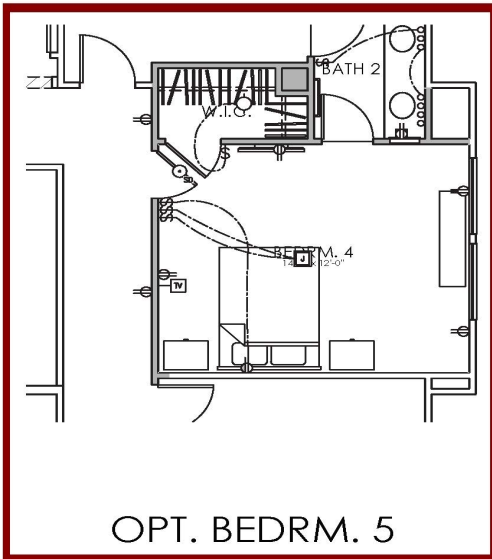
Builder reserves the right to make changes or modifications to maps, plan specifications, materials, features and colors without notice. All maps, plans and renderings are artist's conceptions and are not to scale. All square footages are approximate. Floor plan configurations, porches, window sizes and placements vary in some locations and elevations.



Deer Creek II

Plan 2 Options

3,469 Square Feet • 4 Bedrooms • 4.5 Baths • 3-Car Garage



Deer Creek II

Builder reserves the right to make changes or modifications to maps, plan specifications, materials, features and colors without notice. All maps, plans and renderings are artist's conceptions and are not to scale. All square footages are approximate. Floor plan configurations, porches, window sizes and placements vary in some locations and elevations.